



Weekly Class Newsletter

March 13, 2016



Hey everyone!

This week we are moving to our Poetry unit and focusing on writing poetry using stanzas, imagery, metaphors, and similes. We will also look at personification and phrases that require deeper thinking and understanding using context clues.

In math, we will continue with our equivalent fractions but also move forward with word problems and how we can compare fractions in several ways. Science we will continue with our look into the solar system and how objects in the sky contribute to cycle changes and weather patterns.

Our Schedule

8:45-9:15: Morning work

9:15-9:30: Morning meeting

9:30-10:30: Math

10:30-11:10: Social Studies

11:15-12:00: Specials

12:10-12:40: LUNCH

12:40-1:10: Recess

1:10-2:40: Reading

2:40-3:00: Word Work/Snack

3:00-3:30: Writing

3:30-3:40: Pack up/Dismissal/Read aloud

Specials:

Monday- Computer

Tuesday- PE

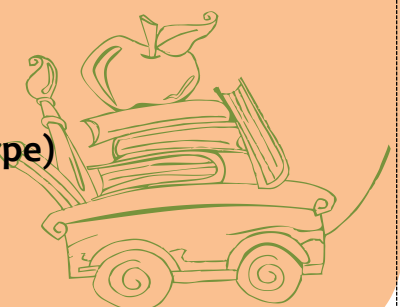
Wednesday- Music

Thursday- Art

Friday- Media

WISH LIST

- **Composition notebooks for backup use**
- **String**
- **Tape (any type)**



Dates to Remember:

**Wax museum: Wednesday, March 15:
Media Center 2:30-3:30 (please have your
child BRING their clothes for the museum
in a bag. Then we will dress them up
prior to the Wax Museum)**

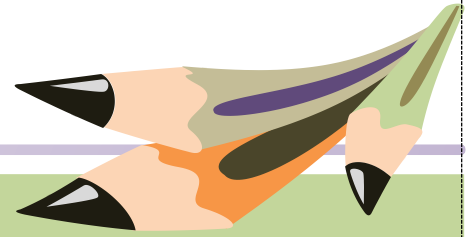
Tuesday, March 21: PTA Meeting 7:00pm

Friday, March 24: Early Release

Friday, March 31: Science day 😊

**Field trip: April 25th and is \$9. [Online
Payment Portal](#)**

**Thank you to those that have turned in
your child's forms and lunch information!
Payment for the Field trip can be done
this week in an envelope or online at the
link provided above.**



The next week

Reading:

- ◆ Fiction with mysteries
- ◆ Explaining cause and effect
- ◆ Finding the clues and evidence in the story

Math:

- ◆ Multi-step word problems
- ◆ Fractions

Social Studies/ Science:

- ◆ Objects in the Sky

